



# CONDUCTIVITY

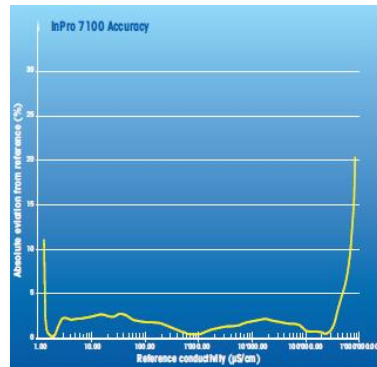


Ex II 1/2G Ex ia IIB T6/T5/T4

Order-No.: MT52003791

## Digital Conductivity Sensors InPro 7100i in Ex-version

4-electrodes sensor from Mettler-Toledo designed for a wide range of applications, from water-/waste water to chemical, food and paper industry. The Intelligent Sensor Management (ISM<sup>®</sup>) from Mettler Toledo simplified the initial operation thanks to Plug & Measure. A microchip inside the sensor head stores all relevant sensor data. The digital data transmission is non-sensitive to noise and thereby far fail-safe.



## Powerful

- **Fast response time**
- High resistance to aggressive fluids.
- **Wide measurement range** up to 500000 µS/cm
- Applicable inside a **wide temperature and pressure range**
- Intelligent Sensor Management (ISM<sup>®</sup>) technology
- **Digital and low maintenance**
- **Replaceable on-site**  
(in Zone 1+2 in accordance with the ATEX directive)

## Reliable Sensor

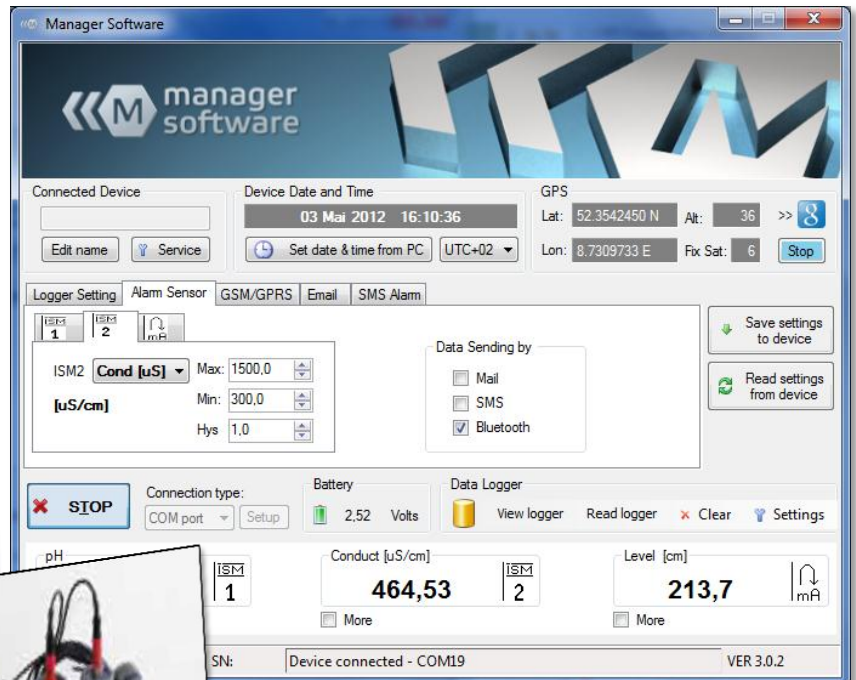
Well-proven conductivity measurement with the digital ISM<sup>®</sup> sensor from Mettler-Toledo ensures stable and accurate readings.

## Plug & Measure

All Mlog using ISM-Sensors are replaceable on-site (**simply and reliable**). That will help you to reduce the total operating costs.

## Technical data: Mlog InPro<sup>®</sup> 7100i conductivity sensor

ATEX label	II 1/2G Ex ia IIB T6/T5/T4	
Enclosure rating	IP 68	(VP Connector Nemax 4X)
Dimension	Total 180 mm (7.09")	shaft 120 mm (4.72") Ø 12 mm (0.47")
Plug head	Pg 13.5 thread; IP68	
Temperature	Measuring	-20 °C .. + 150 °C (-4°F...+302°F)
	Sterilization	-20 °C .. + 150 °C (-4°F...+302°F)
Max. pressure	0...20 bar at 135°C	(0...290 psi at 275°F)
	0...10 bar at 150°C	(0...145 psi at 302°F)
ISM <sup>®</sup> Sensor-range	Precision	±5% and better
	mS/cm	0.02-500
Mlog connection	Digital ISM-1wire-Bus (max. length 10)	
intrinsically safe sensor	ISM <sup>®</sup>	Uo 6.6 V; Io 8 mA; Lo 100mH



Presented by:

